

Your Trusted Partner
in Sealing Solutions

When Sealing Matters Trust Waheguru Rubber



WAHEGURU RUBBER MFG. CO. PVT. LTD.

ISO 9001 Company

www.wahegururubber.com



WRM PRESSURE LOCK SEAL

Lock Seal – locked-in type seal. Ideal for high pressure applications – stays locked in place for transport and assembly. Pressure lock seal uses the EN1452 groove specification.

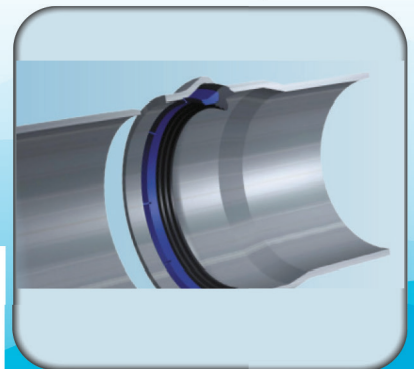
Seal Design / Performance

Pressure lock seal is a combined lip & compression seal. Pressure lock joint ring exceeds current standards for pressure, vacuum, deflection and shear load. The WRM pressure lock seal design requires lower insertion pressures making assembly easier.

Material Specs

- EPDM – Class 60°/70°
- Approved to Approved to SANS 4633 / En 681 / ISO 4633
- Approved for contact with cold potable water
- Ozone Resistant

General Application: PVC pipes are used in the construction of the vast networks of water and sewer piping systems around the world. It is essential that these pipes convey various fluids without leakage through joints, and also to prevent other materials such as ground water (Inflow/Infiltration) and soils from migrating into the pipe through faulty joints. The WRM Pressure Lock seal makes this joining process possible with ensuring the seal integrity for the full system life



CERTIFICATE OF COMPLIANCE

Certificate Number
Report Reference
Date

UL US-2342ESG-0
EX28904.20221028
4-Nov-2022

Issued to:
Waheguru Rubber Mfg Co Pvt Ltd
1a Raja Sabana Mulla Square - ground floor Kolkata, West Bengal 700015 India

This is to certify that representative samples of
HES22 - Gaskets for Use with Cast Iron and Ductile-Iron Pipe with Mechanical Joints - Component
(See Addendum Page for Product Designation(s))
Have been evaluated by UL in accordance with the component requirements in the Standard(s) indicated on this Certificate. UL Recognized components are incomplete in certain constructional features or restricted in performance capabilities and are intended for installation in complete equipment submitted for investigation to UL LLC.

Standards for Safety:
UL 194, 6th Ed. Issue Date: 2005-11-30; Revision Date: 2016-10-14

Additional Information:
See the UL Online Certifications Directory at <https://licensingcenter.com> for additional information

This Certificate of Compliance indicates that representative samples of the product described in the certification report meet the requirements for UL certification. It does not provide authorization to apply the UL Recognized Component Mark. Only the Authorization Page that references the Follow-Up Services Procedure for ongoing surveillance provides authorization to apply the UL Mark.

Only those products bearing the UL Recognized Component Mark should be considered as being UL Certified and covered under UL's Follow-Up Services.

Look for the UL Recognized Component Mark on the product.

E. J. Mather
UL

NSF International

789 N. Dixboro Road, Ann Arbor, MI 48106 USA
RECOGNIZES
Waheguru Rubber Mfg. Co. Pvt. Ltd.
Facility: West Bengal, India
AS COMPLYING WITH NSF(ANSI CAN) 61 AND ALL APPLICABLE REQUIREMENTS.
PRODUCTS APPEARING IN THE NSF OFFICIAL LISTING ARE
AUTHORIZED TO BEAR THE NSF MARK.

NSF
ANSI
NSF 61
August 17, 2021
Certificate ID:443334-01
Neema Mittal
Global Manager, Water Systems

Approval Number 2342ESG
Test Report 20220814 & 20220815

WRAS
WATER RESEARCH AND SUPPLY INSTITUTE
Water Regulations Approval Scheme UK (WRAS)
Water Regulations Approval Scheme UK (WRAS)
Part of Fair Future Plan
WRAS
WRAS
WRAS
WRAS

Water Regulations Approval Scheme UK (WRAS)
REGULATIONS APPROVED
This material is subject to the same conditions as for the material in question being used for the purposes of WRAS (Water Regulations Approval Scheme UK) approval. It is intended for use in contact with water. This material is subject to the same conditions as for the material in question being used for the purposes of WRAS (Water Regulations Approval Scheme UK) approval. It is intended for use in contact with water. This material is subject to the same conditions as for the material in question being used for the purposes of WRAS (Water Regulations Approval Scheme UK) approval. It is intended for use in contact with water.

REGULATIONS APPROVED FOR USE IN CONTACT WITH POTABLE WATER ONLY.
WRAS

NSF-61-NSF-61-NSF-61-NSF-61
Bore (Outside) Compression-Insulated EPDM material with a close tolerance of between 0.04 & 0.06. Tested in a lab in accordance with WRAS.

For use with water up to 65°C.
APPROVAL NUMBER 2342ESG
APPROVAL HOLDER WAHEGURU RUBBER MANUFACTURING CO. (P) LTD.

Approved 2342ESG-01 (Water Research Institute) 2013 and September 2018
An entry, as shown, will normally be retained in the Water Filings Directory on the web under the brand named. Markings which have appeared in the past of this material.

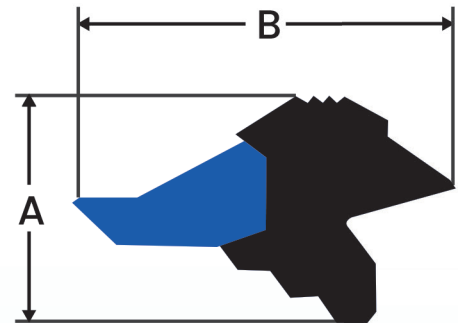
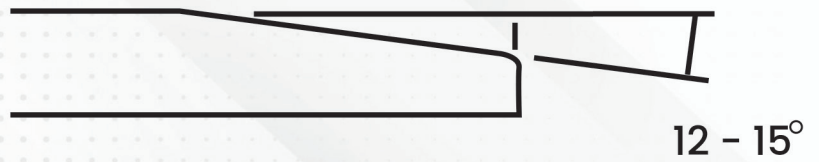
The Director may be found at enquiries@wras.gov.uk

NSF
WRAS

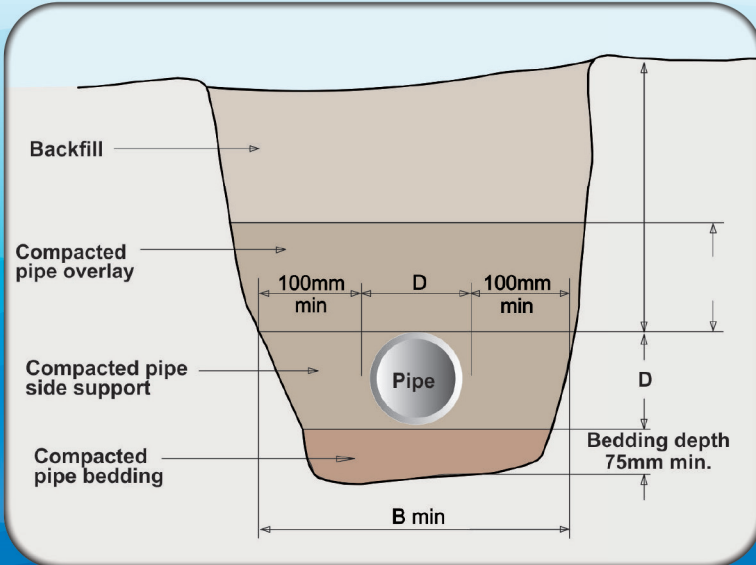


PIPE ASSEMBLY

1. Chamfer spigot end
2. Clean socket
3. Apply non-solvent based lubricant to spigot end before assembly
4. Slide the spigot into socket, thus compressing the sealing lip as seen below

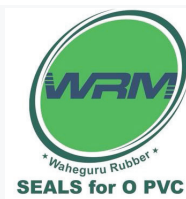


Pipes using the WRM pressure lock seal should always be laid in accordance with applicable standards and regulations



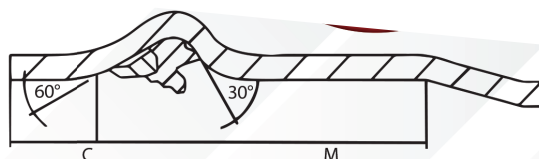
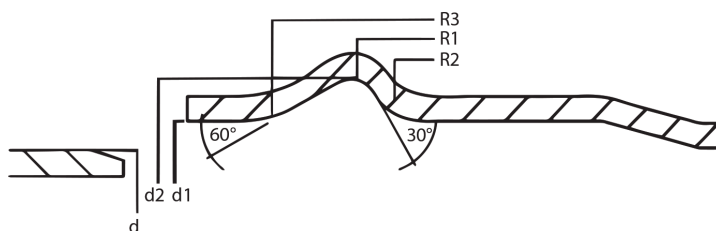
PRESSURE LOCK SEAL DIMENSIONS			
SIZE	A	B	OD
63	10,4 ±0,3	17,8 ±0,8	81,1 ±0,3
75	11,6 ±0,3	19,9 ±0,8	95,1 ±0,5
90	12,7 ±0,4	21,7 ±0,8	112,0 ±0,5
110	13,8 ±0,4	23,6 ±0,8	134,1 ±0,6
125	13,8 ±0,4	23,6 ±0,8	149,1 ±0,6
140	14,8 ±0,4	25,3 ±1,0	166,1 ±0,7
160	15,9 ±0,4	27,2 ±1,0	188,1 ±0,8
180	16,2 ±0,5	28,2 ±1,0	210,8 ±1,0
200	16,9 ±0,5	29,0 ±1,0	230,1 ±1,0
225	18,0 ±0,5	30,8 ±1,0	257,3 ±1,0
250	21,1 ±0,5	34,2 ±1,0	285,7 ±1,2
280	22,5 ±0,5	36,1 ±1,0	319,4 ±1,5
315	23,6 ±0,5	37,6 ±1,0	355,0 ±1,5
355	24,0 ±0,5	38,6 ±1,0	400,0 ±1,5
400	28,0 ±0,6	44,9 ±1,3	447,8 ±1,9
450	29,5 ±0,6	47,0 ±1,3	500,6 ±2,0
500	32,2 ±0,6	51,6 ±1,3	556,3 ±2,3
630	38,2 ±0,6	61,3 ±1,3	695,0 ±2,8





WHEN SEALLING MATTERS TRUST WAHEGURU RUBBER

ISO / EN 1452 - WRW ANGER GROOVE CLASS RECOMMENDATION



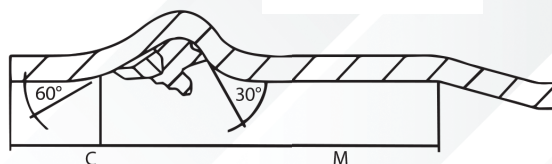
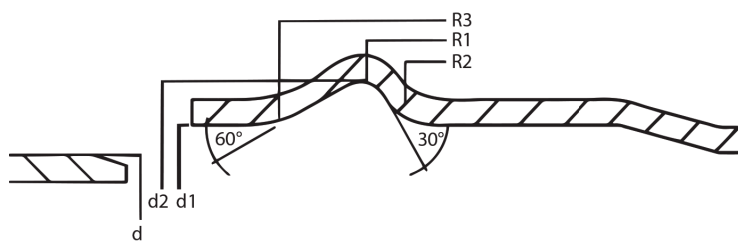
DIM	CLASS 6			CLASS 9			CLASS 12			CLASS 16			CLASS 20			CLASS 25				
	Profile	PRESS	3s	LOCK	PRESS	3s	LOCK	PRESS	3s	LOCK	PRESS	3s	LOCK	PRESS	3s	LOCK	PRESS	3s	LOCK	
50	.	.	not avail	.	.	not avail	.	.	not avail			not avail			not avail				not avail	
63
75
90
110
125
140
160
200
225
250
280
315
355
400
450
500





WHEN SEALLING MATTERS TRUST WAHEGURU RUBBER

ISO / EN 1452 - WRW ANGER GROOVE MEASUREMENTS



UNIT IS MM

DIM	D	TOL	D1	TOL	D2	TOL	R1	TOL	R2	TOL	R3	TOL	M	C MIN
50	50.0	+ 0.2	50.4	+ 0.6	61.7	+ 0.6	4.5	+ 0.8	9	±1.5	16	±2	26.3	14
63	63.0	+ 0.3	63.6	+ 0.7	80.0	+ 0.8	5.0	+ 0.8	10	±2	18	±2	30.5	15
75	75.0	+ 0.3	75.6	+ 0.7	93.9	+ 0.8	5.5	+ 0.8	11	±2	20	±2	35.5	16
90	90.0	+ 0.3	90.7	+ 0.8	110.7	+ 0.8	6.0	+ 1.0	12	±2	22	±3	38.5	17
110	110.0	+ 0.4	110.8	+ 0.9	132.5	+ 0.9	6.5	+ 1.0	14	±2	25	±4	43.0	18
125	125.0	+ 0.4	125.9	+ 1.0	147.4	+ 1.0	7.0	+ 1.0	15	±2	27	±4	45.0	19
140	140.0	+ 0.5	140.9	+ 1.1	164.2	+ 1.0	7.0	+ 1.0	16	±2	29	±4	47.0	20
160	160.0	+ 0.5	161.1	+ 1.1	186.0	+ 1.1	7.5	+ 1.2	19	±2	32	±5	51.0	22
177	177.0	+ 0.4	177.5	+ 1.1	198.1	+ 1.1	7.8	+ 1.2	19	±3	35	±6	55.0	23
200	200.0	+ 0.6	201.2	+ 1.1	227.6	+ 1.2	8.0	+ 1.2	22	±3	37	±7	56.0	24
250	250.0	+ 0.8	251.5	+ 1.1	282.6	+ 1.4	9.0	+ 1.6	25	±4	44	±7	66.5	27
315	315.0	+ 1.0	316.8	+ 1.2	355.3	+ 1.6	10.5	+ 1.8	33	±4	54	±10	77.5	30
355	355.0	+ 1.1	357.1	+ 1.2	394.7	+ 1.8	11.0	+ 2.0	37	±5	58	±10	85.0	33
400	400.0	+ 1.2	402.2	+ 1.2	443.1	+ 2.0	11.5	+ 2.0	39	±5	65	±13	88.0	36
450	450.0	+ 1.4	452.5	+ 1.3	495.4	+ 2.0	13.5	+ 2.0	44	±5	72	±13	98.0	42
500	500.0	+ 1.4	502.6	+ 1.4	549.6	+ 2.0	14.5	+ 2.4	51	±5	81	±13	110.5	48
560	560.0	+ 1.4	562.8	+ 1.4	614.0	+ 2.1	15.8	+ 2.6	56	±6	88	±14	127.0	52
630	630.0	+ 1.5	633.1	+ 1.5	688.8	+ 2.1	17.2	+ 2.8	62	±7	98	±14	139.0	62





Product & Service

Recognitions

Rubber Gaskets

Approval Number 2109552
Test Report: J-00392658 & J-00392659



Certificate Number UL-US-2242529-0
Report Reference EX28904-20221028
Date 4-Nov-2022



NSIC Certificate No. NISC/GP/KOL/2014/0005949



Applied for



Certificate No. EN 681-1:1996/A3:2005



KVQA Certification Services Pvt. Ltd.
Certificate No. : KDACQ201808158
ISO 9001:2015



NSF International
Certificate No. : C0485542-01



Rubber Push-On Gaskets

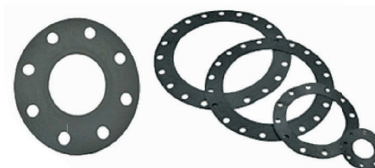
We hold expertise in offering rubber push on gaskets. It prevents leakage and helps in the leakagefree push on joint of DI Pipe. We use high quality material for manufacturing this gasket in compliance with the industry standards. These gaskets are designed in different sizes for the different kind of pipes.

ISO 4633 & BSEN No. 681-1, WA/WC 50/80



Industrial Flanged Gaskets

Precision engineered range of Industrial Gaskets offered by us is highly demanded in various industries



Various Profiles of Seals

Seals for Fibre Glass Pipe

IS : 5382, BSEN 681-1
ISO 4633, DIN : 4060





WAHEGURU RUBBER MFG. CO. PVT. LTD.

Our Valuable Customers



Indian Railways

ICF

Integral Coach Factory (I.C.F.),
Chennai.



Ordnance Equipment
Factory (O.E.F.), Kanpur.



KOLKATA PORT TRUST



Vishakhapatnam Port Trust



O.N.G.C., Ahmedabad.

OMC

Odisha Mining Corporation Limited (OMC)
Orissa Mining Corporation
(O.M.C.)



सेल SAIL

Durgapur Steel Plant,
Durgapur.



Pride of Steel
Vizag Steel

TATA METALIKS

Tata Metaliks, Kharagpur



INSPIRING GROWTH
SRIKALAHASTHI PIPES

**RASHMI
GROUP**

Rashmi Metaliks



Jai Balaji Group

Jai Balaji



JINDAL SAW LTD.

Jindal Saw Ltd.

**ELECTROSTEEL
CASTINGS LTD.**

Electrosteel Castings Ltd.

ELECTROSTEEL STEELS LIMITED

Electrosteel Steels Limited

**EXIDE
INDUSTRIES LIMITED**

Exide Industries Limited, Kolkata

T.R.F.

T.R.F. – (A Tata Group of Co.)
Jamshedpur

TATA STEEL

Tata Steel – (A Tata Group of Co.)
Jamshedpur



BHUSHAN

Bhushan Industries Limited
Kolkata

Hindusthan Udyog

Hindusthan Udyog, Kolkata



MANUFACTURER AND EXPORTER



WAHEGURU RUBBER MFG. CO. PVT. LTD.

SS Enterprises

190, Ghodbunder Rd, Kasarvadavali,
Mira Road, Mumbai, Maharashtra 401107

Ph. : 9820064848 / 98300 77664

Email : pssoni@soni.co.in

sshardeep@hotmail.com