

Your Trusted Partner
in Sealing Solutions

When Sealing Matters Trust Waheguru Rubber



* Waheguru Rubber *
SEALS for O PVC

WAHEGURU RUBBER MFG. CO. PVT. LTD.



VAN RYN RUBBER HOLDINGS
Manufacturers of injection and
Compression moulded rubber products

Under Technical Collaboration,
South Africa 

ISO 9001 Company

www.wrmseals.com



WAHEGURU RUBBER MFG. CO. PVT. LTD.

WRM PRESSURE LOCK SEAL

Lock Seal – locked-in type seal . Ideal for high pressure applications – stays locked in place for transport and assembly . Pressure lock seal uses the EN1452 groove specification.

Seal Design / Performance

Pressure lock seal is a combined lip & compression seal. Pressure lock joint ring exceeds current standards for pressure , vacuum, deflection and shear load. TheWRMpressure lock seal design requires lower insertion pressures making assembly easier.

Material Specs

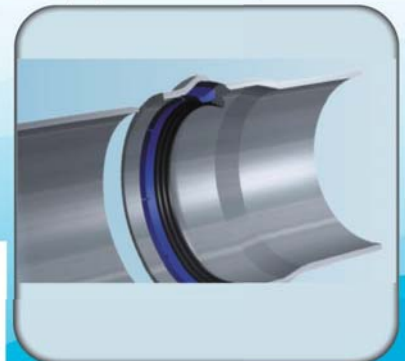
EPDM – Class 60°/70°

Approved to Approved to SANS 4633 / En 681 / ISO 4633

Approved for contact with cold potable water

Ozone Resistant

General Application: PVC pipes are used in the construction of the vast networks of water and sewer piping systems around the world. It is essential that these pipes convey various fluids without leakage through joints, and also to prevent other materials such as ground water (Inflow/Infiltration) and soils from migrating into the pipe through faulty joints. The WRM Pressure Lock seal makes this joining process possible with ensuring the seal integrity for the full system life



www.wrmseals.com

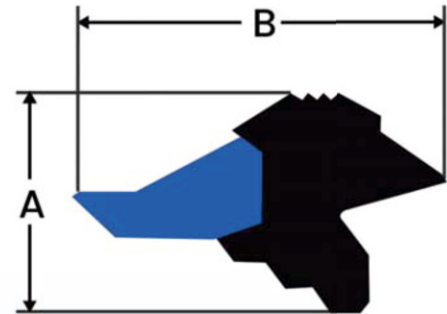


Under Technical Collaboration,
South Africa

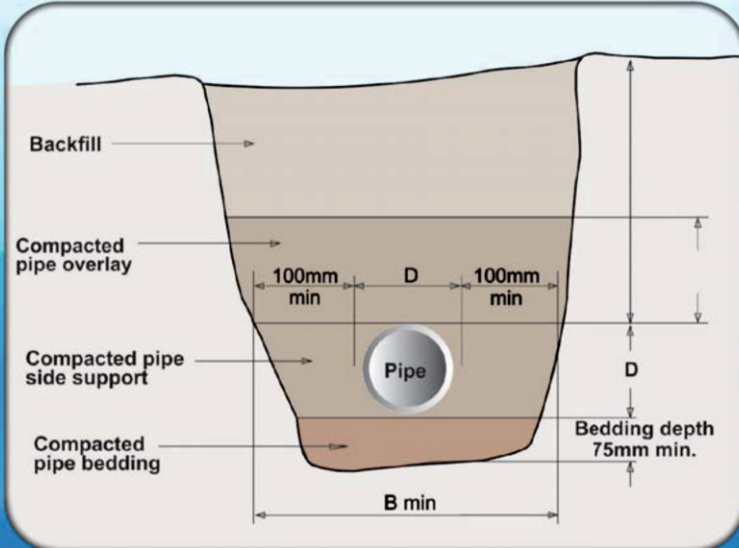


PIPE ASSEMBLY

1. Chamfer spigot end
2. Clean socket
3. Apply non-solvent based lubricant to spigot end before assembly
4. Slide the spigot into socket, thus compressing the sealing lip as seen below



Pipes using the WRM pressure lock seal should always be laid in accordance with applicable standards and regulations



PRESSURE LOCK SEAL DIMENSIONS

SIZE	A	B	OD
63	10,4 ±0,3	17,8 ±0,8	81,1 ±0,3
75	11,6 ±0,3	19,9 ±0,8	95,1 ±0,5
90	12,7 ±0,4	21,7 ±0,8	112,0 ±0,5
110	13,8 ±0,4	23,6 ±0,8	134,1 ±0,6
125	13,8 ±0,4	23,6 ±0,8	149,1 ±0,6
140	14,8 ±0,4	25,3 ±1,0	166,1 ±0,7
160	15,9 ±0,4	27,2 ±1,0	188,1 ±0,8
180	16,2 ±0,5	28,2 ±1,0	210,8 ±1,0
200	16,9 ±0,5	29,0 ±1,0	230,1 ±1,0
225	18,0 ±0,5	30,8 ±1,0	257,3 ±1,0
250	21,1 ±0,5	34,2 ±1,0	285,7 ±1,2
280	22,5 ±0,5	36,1 ±1,0	319,4 ±1,5
315	23,6 ±0,5	37,6 ±1,0	355,0 ±1,5
355	24,0 ±0,5	38,6 ±1,0	400,0 ±1,5
400	28,0 ±0,6	44,9 ±1,3	447,8 ±1,9
450	29,5 ±0,6	47,0 ±1,3	500,6 ±2,0
500	32,2 ±0,6	51,6 ±1,3	556,3 ±2,3
630	38,2 ±0,6	61,3 ±1,3	695,0 ±2,8

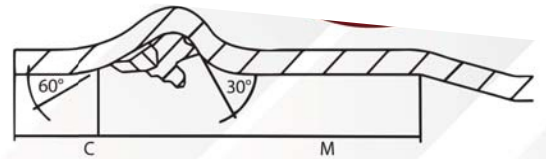
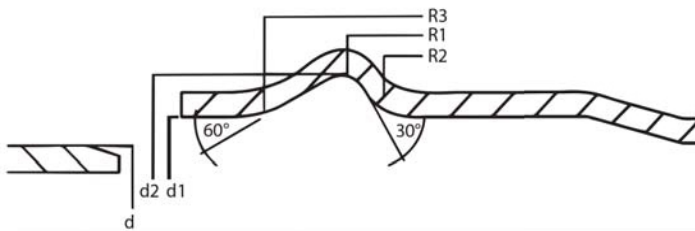




WAHEGURU RUBBER MFG. CO. PVT. LTD.

WHEN SEALLING MATTERS TRUST WAHEGURU RUBBER

ISO / EN 1452 - WRW ANGER GROOVE CLASS RECOMMENDATION



DIM	CLASS 6			CLASS 9			CLASS 12			CLASS 16			CLASS 20			CLASS 25		
Profile	PRESS	3s	LOCK	PRESS	3s	LOCK	PRESS	3s	LOCK	PRESS	3s	LOCK	PRESS	3s	LOCK	PRESS	3s	LOCK
50	.	.	not avail	.	.	not avail	.	.	not avail			not avail			not avail			not avail
63
75
90
110
125
140
160
200
225
250
280
315
355
400
450
500



www.wrmseals.com

VRR VAN RYN RUBBER HOLDINGS
Manufacturers of injection and
Compression moulded rubber products

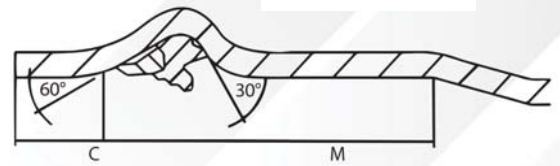
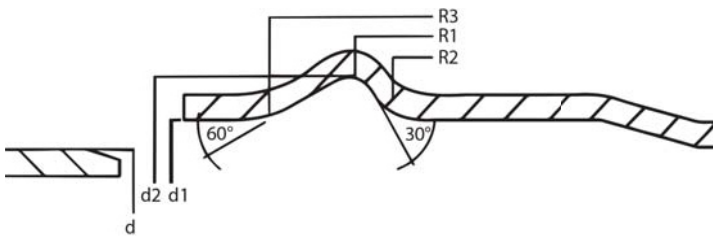
Under Technical Collaboration,
South Africa



WAHEGURU RUBBER MFG. CO. PVT. LTD.

WHEN SEALLING MATTERS TRUST WAHEGURU RUBBER

ISO / EN 1452 - WRW ANGER GROOVE MEASUREMENTS



UNIT IS MM

DIM	D	TOL	D1	TOL	D2	TOL	R 1	TOL	R 2	TOL	R 3	TOL	M	C MIN
50	50.0	+ 0.2	50.4	+ 0.6	61.7	+ 0.6	4.5	+ 0.8	9	±1.5	16	±2	26.3	14
63	63.0	+ 0.3	63.6	+ 0.7	80.0	+ 0.8	5.0	+ 0.8	10	±2	18	±2	30.5	15
75	75.0	+ 0.3	75.6	+ 0.7	93.9	+ 0.8	5.5	+ 0.8	11	±2	20	±2	35.5	16
90	90.0	+ 0.3	90.7	+ 0.8	110.7	+ 0.8	6.0	+ 1.0	12	±2	22	±3	38.5	17
110	110.0	+ 0.4	110.8	+ 0.9	132.5	+ 0.9	6.5	+ 1.0	14	±2	25	±4	43.0	18
125	125.0	+ 0.4	125.9	+ 1.0	147.4	+ 1.0	7.0	+ 1.0	15	±2	27	±4	45.0	19
140	140.0	+ 0.5	140.9	+ 1.1	164.2	+ 1.0	7.0	+ 1.0	16	±2	29	±4	47.0	20
160	160.0	+ 0.5	161.1	+ 1.1	186.0	+ 1.1	7.5	+ 1.2	19	±2	32	±5	51.0	22
177	177.0	+ 0.4	177.5	+ 1.1	198.1	+ 1.1	7.8	+ 1.2	19	±3	35	±6	55.0	23
200	200.0	+ 0.6	201.2	+ 1.1	227.6	+ 1.2	8.0	+ 1.2	22	±3	37	±7	56.0	24
250	250.0	+ 0.8	251.5	+ 1.1	282.6	+ 1.4	9.0	+ 1.6	25	±4	44	±7	66.5	27
315	315.0	+ 1.0	316.8	+ 1.2	355.3	+ 1.6	10.5	+ 1.8	33	±4	54	±10	77.5	30
355	355.0	+ 1.1	357.1	+ 1.2	394.7	+ 1.8	11.0	+ 2.0	37	±5	58	±10	85.0	33
400	400.0	+ 1.2	402.2	+ 1.2	443.1	+ 2.0	11.5	+ 2.0	39	±5	65	±13	88.0	36
450	450.0	+ 1.4	452.5	+ 1.3	495.4	+ 2.0	13.5	+ 2.0	44	±5	72	±13	98.0	42
500	500.0	+ 1.4	502.6	+ 1.4	549.6	+ 2.0	14.5	+ 2.4	51	±5	81	±13	110.5	48
560	560.0	+ 1.4	562.8	+ 1.4	614.0	+ 2.1	15.8	+ 2.6	56	±6	88	±14	127.0	52
630	630.0	+ 1.5	633.1	+ 1.5	688.8	+ 2.1	17.2	+ 2.8	62	±7	98	±14	139.0	62



www.wrmseals.com

VRR VAN RYN RUBBER HOLDINGS
Manufacturers of Injection and
Compression moulded rubber products

Under Technical Collaboration,
South Africa



WAHEGURU RUBBER MFG. CO. PVT. LTD.

Product & Service

Recognitions

Rubber Gaskets

Approval Number 2109552
Test Report: J-00392658 & J-00392659

Certificate Number UL-US-2242529-0
Report Reference EX28904-20221028
Date 4-Nov-2022

NSIC Certificate No. NISC/GP/KOL/2014/0005949

Applied for



Certificate No. EN 681-1:1996/A3:2005

KVQA Certification Services Pvt. Ltd.
Certificate No. : KDACQ201808158
ISO 9001:2015

NSF International
Certificate No. : C0485542-01



Rubber Push-On Gaskets

We hold expertise in offering rubber push on gaskets. It prevents leakage and helps in the leakage-free push on joint of DI Pipe. We use high quality material for manufacturing this gasket in compliance with the industry standards. These gaskets are designed in different sizes for the different kind of pipes.

ISO 4633 & BSEN No. 681-1, WA/WC 50/80



Industrial Flanged Gaskets

Precision engineered range of Industrial Gaskets offered by us is highly demanded in various industries



Various Profiles of Seals

Seals for Fibre Glass Pipe

IS : 5382, BSEN 681-1
ISO 4633, DIN : 4060



www.wrmseals.com



Under Technical Collaboration,
South Africa



WAHEGURU RUBBER MFG. CO. PVT. LTD.

Our Valuable Customers

OPTIFLUX®

COAL
CHEMFAB ALKALIS LIMITED

FLOKING

Supreme®
People who know plastics best

ashirvad
by aliaxis

Ori-Plast®
HEALTHY PIPES

DELTAQUA®
Bridge That Gap

BHUSHAN
Bhushan Industries Limited
Kolkata

TATA STEEL
Tata Steel – (A Tata Group of Co.)
Jamshedpur

T.R.F.
T.R.F. – (A Tata Group of Co.)
Jamshedpur

JINDAL SAW LTD.
Jindal Saw Ltd.

EXIDE
Exide Industries Limited, Kolkata

**Ordnance Equipment
Factory (O.E.F.), Kanpur.**

Jai Balaji Group
Jai Balaji

**ELECTROSTEEL
CASTINGS LTD.**
Electrosteel Castings Ltd.

SRIKALAHASTHI PIPES

**RASHMI
GROUP**
Rashmi Metaliks

ELECTROSTEEL STEELS LIMITED
Electrosteel Steels Limited

ONGC
O.N.G.C., Ahmedabad.



MANUFACTURER AND EXPORTER



WAHEGURU RUBBER MFG. CO. PVT. LTD.

SS ENTERPRISES

190, Old Ghodbunder Village Rd,
Mira Road, Mumbai, Maharashtra 401 107.

Ph. : 98200 64848 / 98300 77664

Email : pssoni@soni.co.in

hardeep@wormseals.com



Under Technical Collaboration,
South Africa 